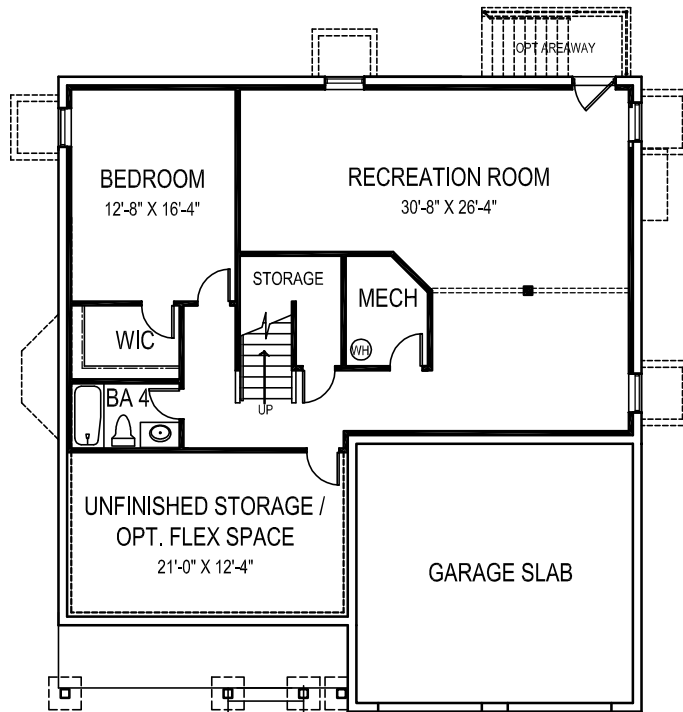
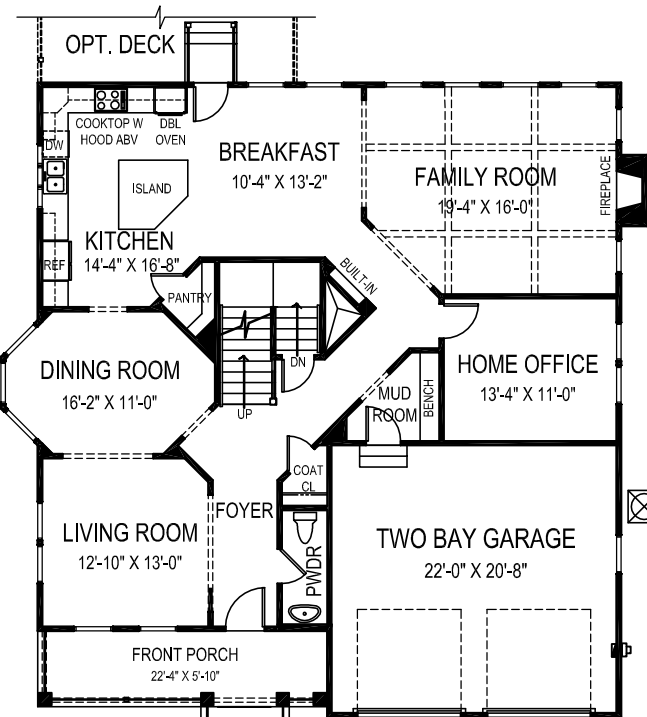


SECOND FLOOR PLAN



BASEMENT PLAN



FIRST FLOOR PLAN



THE BENNETT

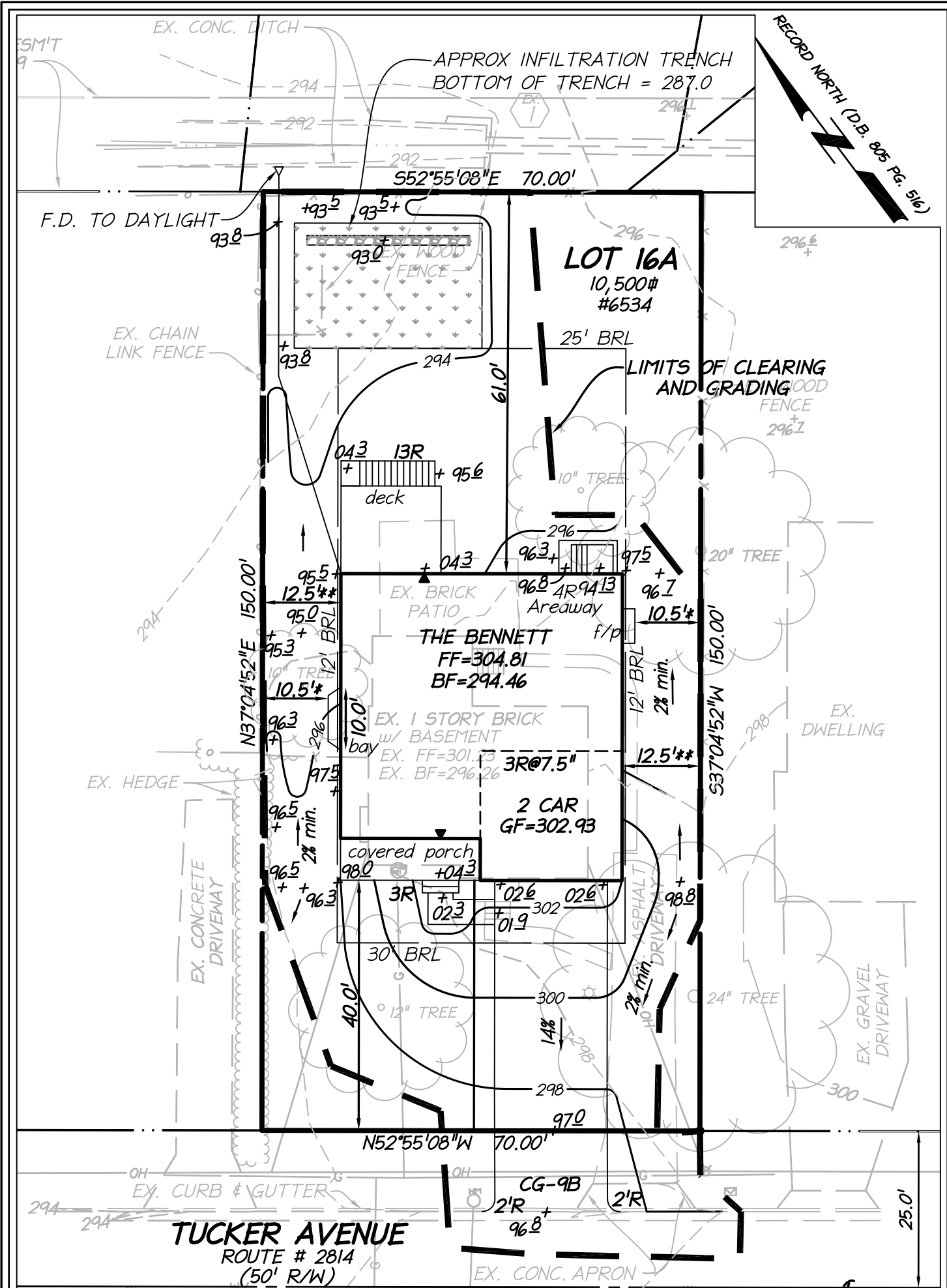
45' wide x 49' deep
5 BR 4.5 BA

FLOOR AREA

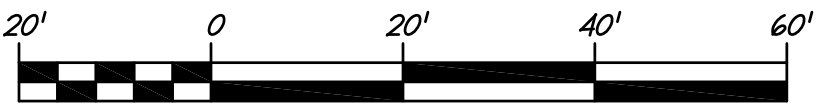
FIRST FLOOR	1615 S.F.
SECOND FLOOR	1913 S.F.
ABOVE GRADE FINISHED SPACE	3528 S.F.
FINISHED BASEMENT SPACE	1208 S.F.
TOTAL FINISHED SPACE	4736 S.F.
OPTIONAL FLEX ROOM	274 S.F.
TOTAL FINISHABLE AREA	5010 S.F.

Specification and plans are provided for illustrative purposes only and are subject to change, modification and/or substitution without notice. October 23, 2014





1) *Z.O. ARTICLE 2-412-ID: TO
 ENCOURAGE, BAY WINDOWS AND
 FIREPLACES MUST BE LESS
 THAN TEN (10) FEET IN WIDTH.



IMPERVIOUS AREA: 3,036 SF. (28.9% OF SITE)

PRELIMINARY SITING
CHESTERFIELD, SECTION ONE
LOT 16A

DRANESVILLE DISTRICT #1A
 FAIRFAX COUNTY, VIRGINIA
 SCALE: 1" = 20' DATE: APRIL 26, 2013
 LDC # 13071-1-0 DRAFT: EAD

UNLOCKING YOUR LAND'S
 POTENTIAL
 4585 DAISY REID AVENUE, SUITE 201
 WOODBRIDGE, VIRGINIA 22192
 PH: 703-680-4585 FX: 703-680-4775