



THE ELISE

55' wide x 51' deep
6 BR 5.5 BA

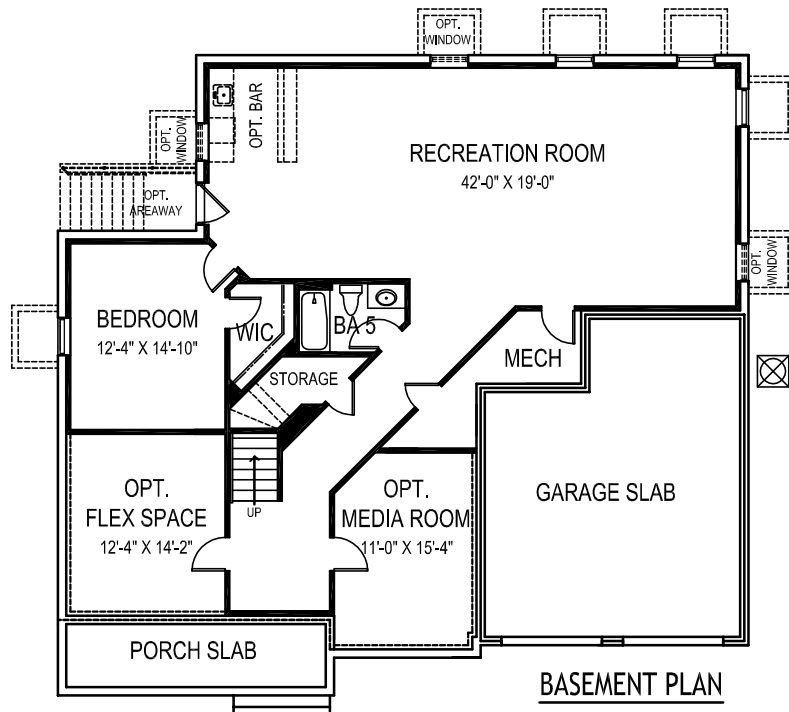
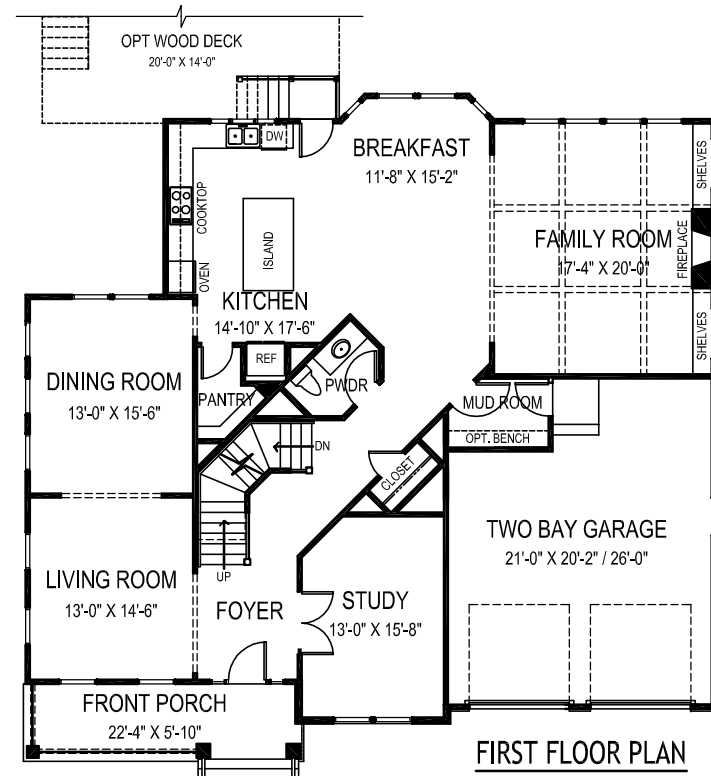
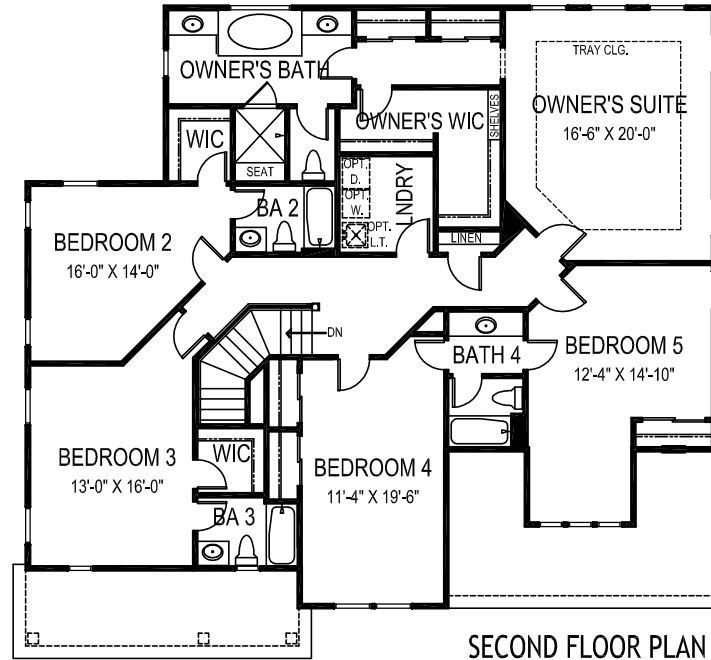
FLOOR AREA

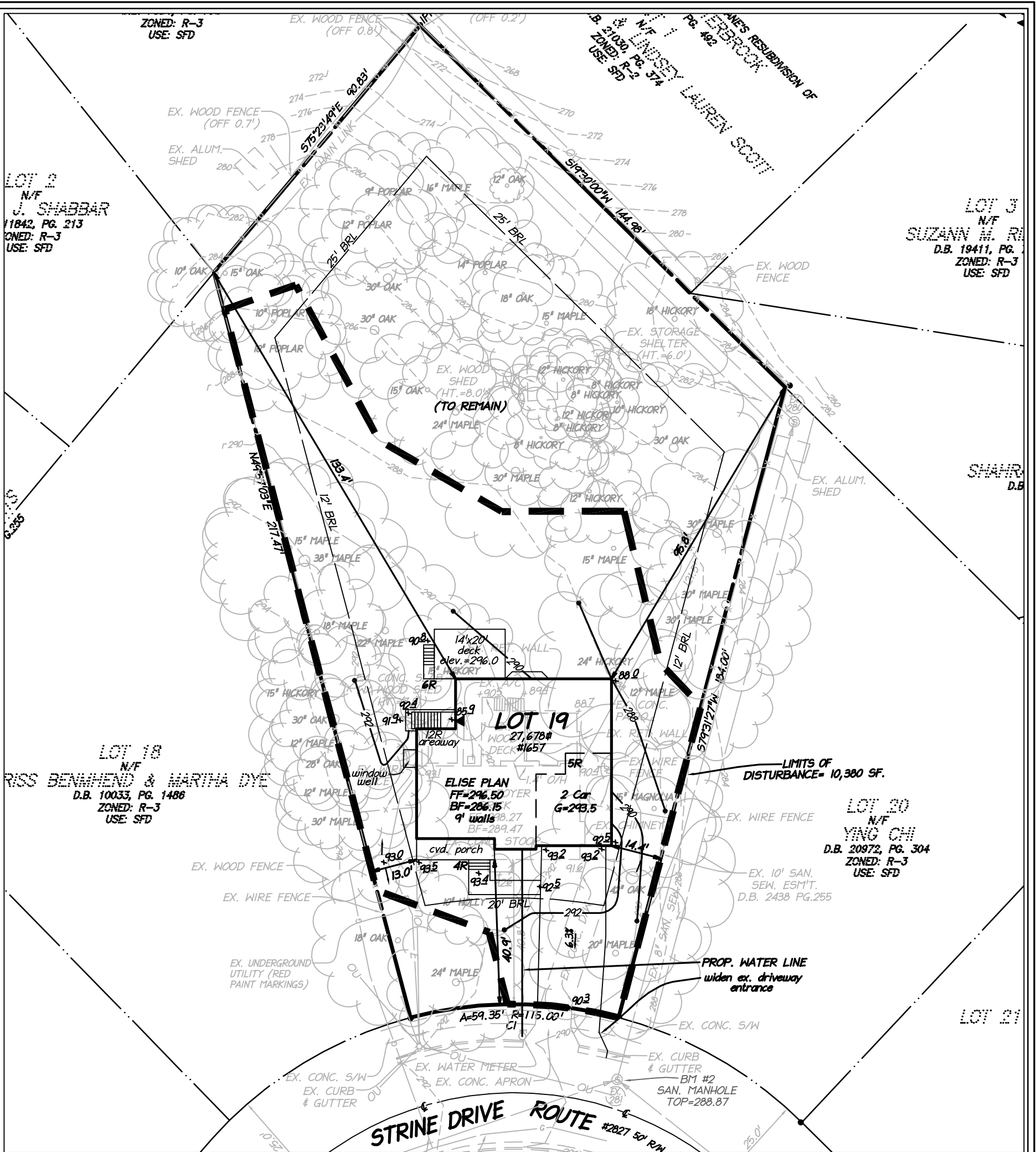
FIRST FLOOR	1907 S.F.
SECOND FLOOR	2219 S.F.
ABOVE GRADE FINISHED SPACE	4126 S.F.
FINISHED BASEMENT SPACE	1343 S.F.
TOTAL FINISHED SPACE	5469 S.F.
OPTIONAL FLEX ROOM	179 S.F.
OPTIONAL MEDIA ROOM	172 S.F.
TOTAL FINISHABLE AREA	5820 S.F.

Specification and plans are provided for illustrative purposes only and are subject to change, modification and/or substitution without notice. October 22, 2014



OPTIONAL SIDE ENTRY GARAGE AVAILABLE

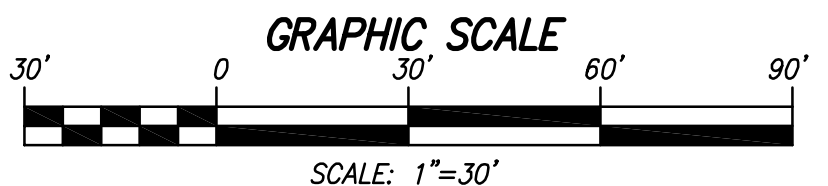
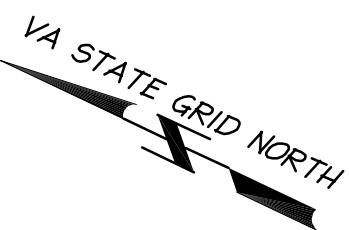




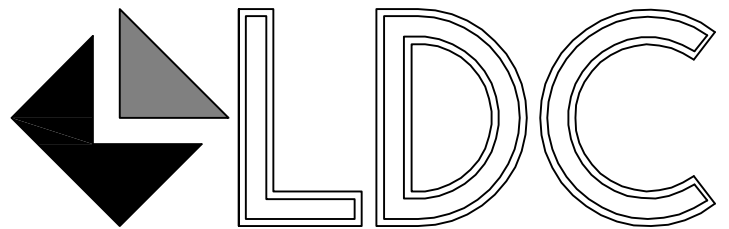
SANITARY LATERAL NOTE:

THE CONTRACTOR SHALL VERIFY THE LOCATION AND DEPTH OF THE EXISTING LATERAL PRIOR TO CONSTRUCTION TO ENSURE GRAVITY SERVICE TO THE PROPOSED BASEMENT. THE EXISTING LATERAL SHALL BE UTILIZED PROVIDED THAT IN GOOD CONDITION AND APPROVED FOR REUSE BY THE COUNTY.

IMPERVIOUS AREA = 3,587 SF (13.0%)



PRELIMINARY SITING
LOT 19
DANA HEIGHTS
 DRANESVILLE DISTRICT
 FAIRFAX COUNTY, VIRGINIA
 SCALE: 1" = 30' DATE: JUNE 14, 2013
 LDC # 13117-1-0 DRAFT: TFS



UNLOCKING YOUR LAND'S
 POTENTIAL
 4585 DAISY REID AVENUE, SUITE 201
 WOODBRIDGE, VIRGINIA 22192
 PH: 703-680-4585 FX: 703-680-4775