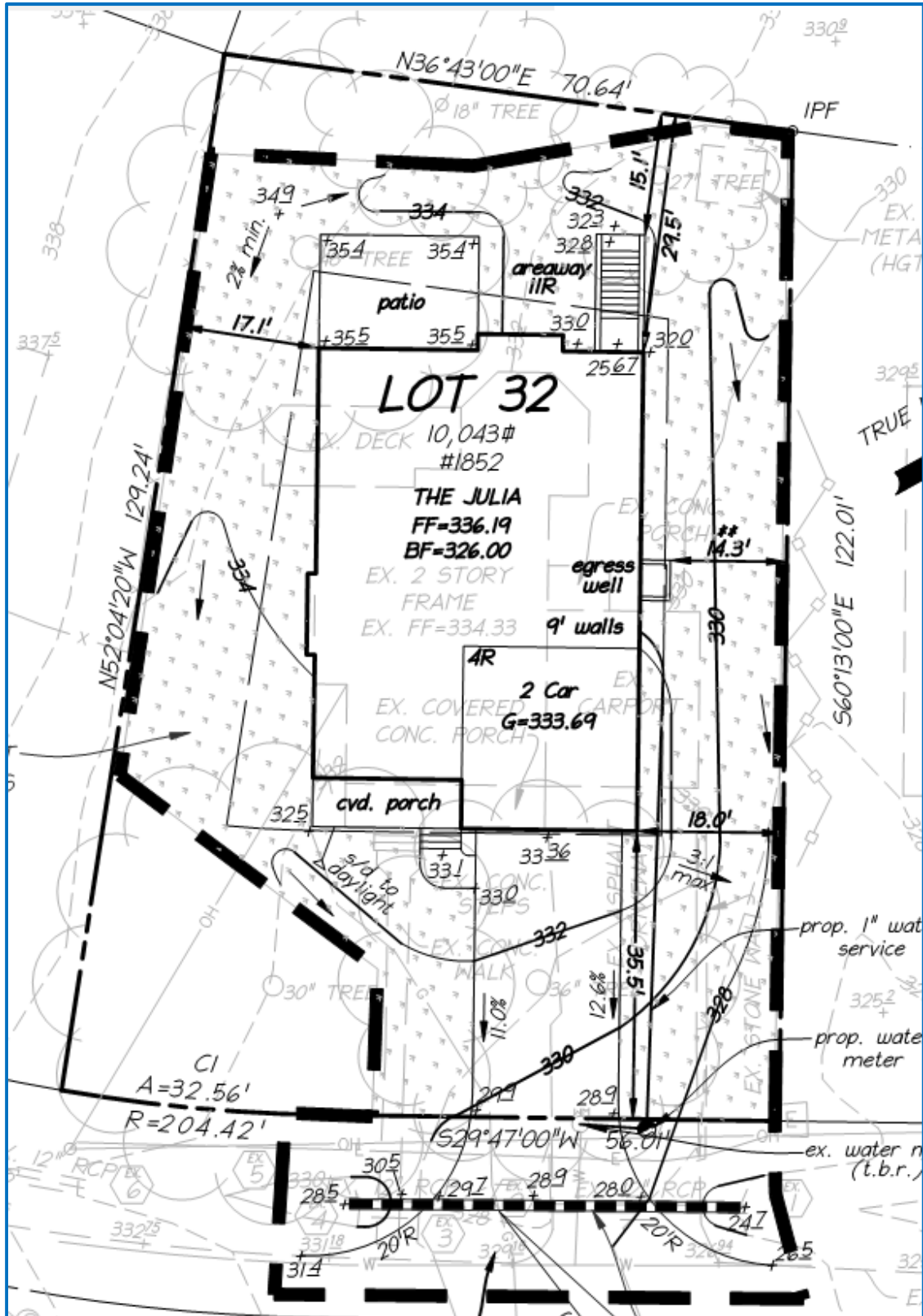


1852 MacArthur Dr, McLean - Draft Site Plan

(Subject to Change)

Updated 1/11/2018

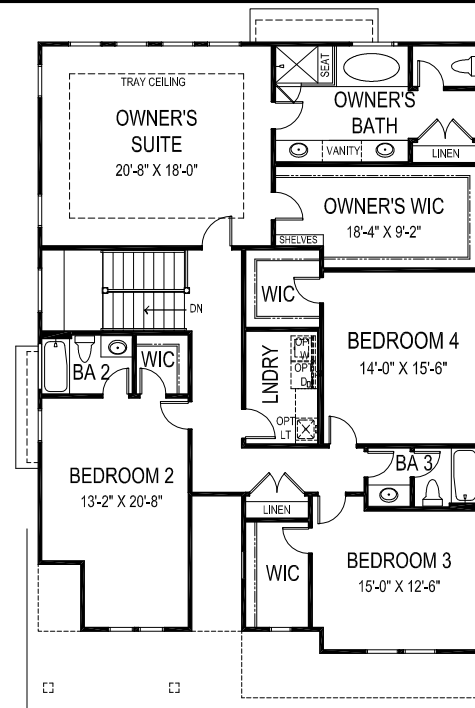


THE JULIA

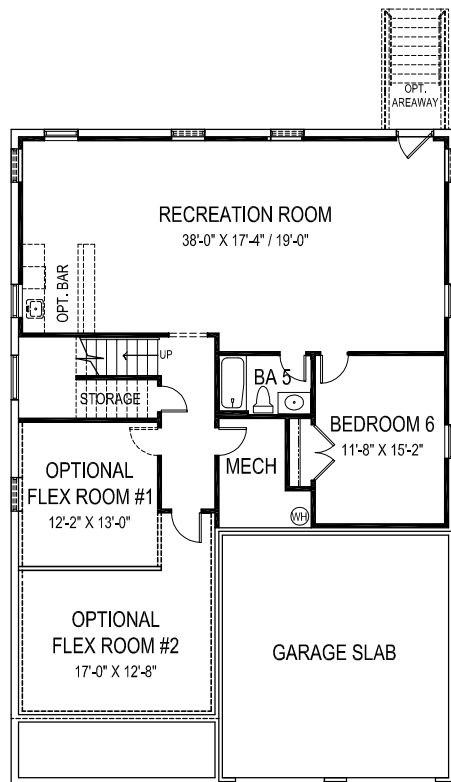
40' wide x 59' deep
6 BR 5 1/2 BA



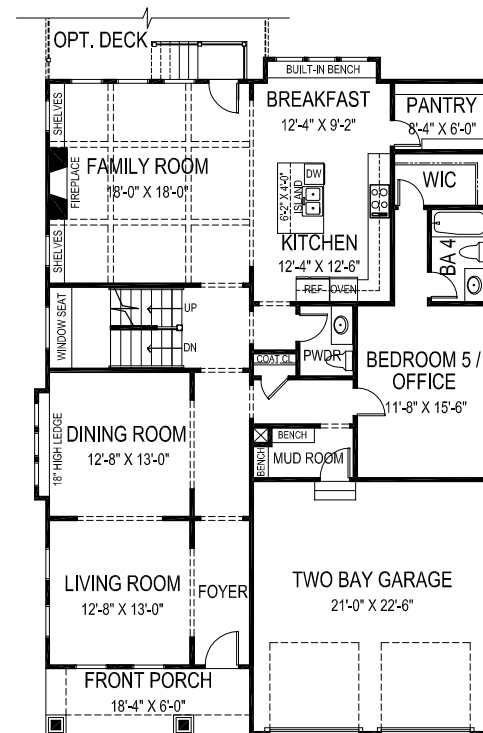
OPTIONAL SIDE ENTRY
GARAGE AVAILABLE



SECOND FLOOR PLAN



BASEMENT PLAN



FIRST FLOOR PLAN

FLOOR AREA

FIRST FLOOR	1792 S.F.
SECOND FLOOR	2072 S.F.
ABOVE GRADE FINISHED SPACE	3864 S.F.
FINISHED BASEMENT SPACE	1167 S.F.
TOTAL FINISHED SPACE	5031 S.F.
OPTIONAL FLEX ROOM	162 S.F.
OPTIONAL MEDIA ROOM	252 S.F.
TOTAL FINISHABLE AREA	5445 S.F.

Specification and plans are provided for illustrative purposes only and are subject to change, modification and/or substitution without notice. November 4, 2016