

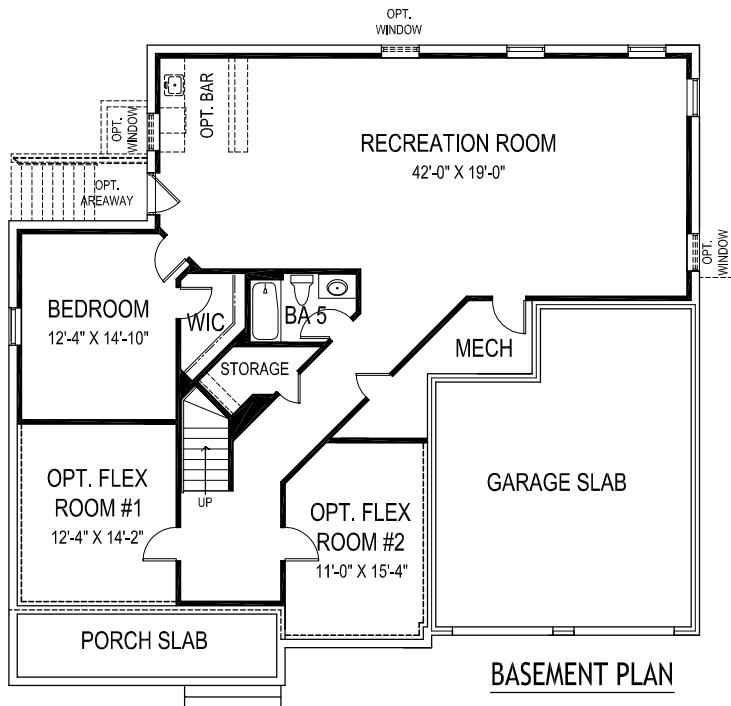
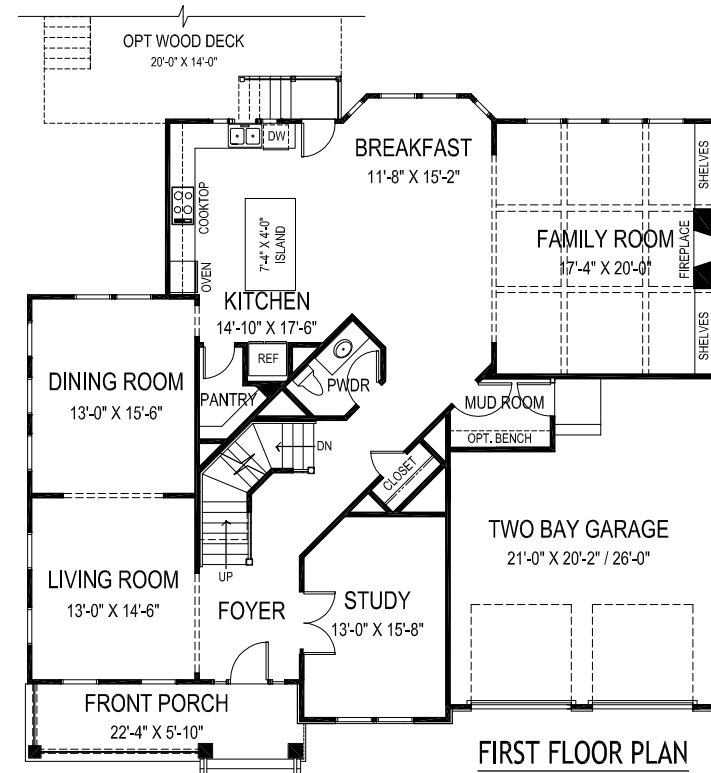
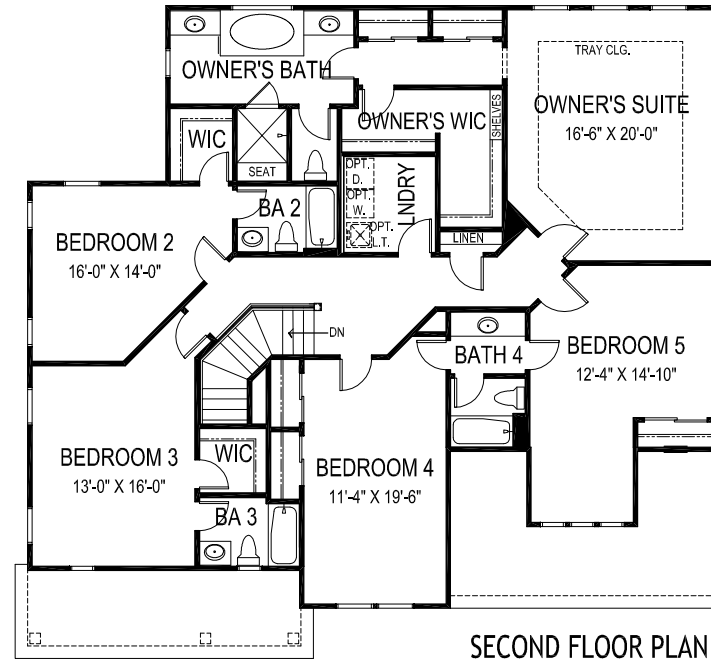
THE ELISE

55' wide x 51' deep
6 BR 5.5 BA



OPTIONAL SIDE ENTRY GARAGE AVAILABLE

Side Entry Included at 938 Dead Run Dr



FLOOR AREA

FIRST FLOOR	1907 S.F.
SECOND FLOOR	2219 S.F.
ABOVE GRADE FINISHED SPACE	4126 S.F.
FINISHED BASEMENT SPACE	1343 S.F.
TOTAL FINISHED SPACE	5469 S.F.
OPTIONAL FLEX ROOM	179 S.F.
OPTIONAL MEDIA ROOM	172 S.F.
TOTAL FINISHABLE AREA	5820 S.F.

Specification and plans are provided for illustrative purposes only and are subject to change, modification and/or substitution without notice. May 24, 2016