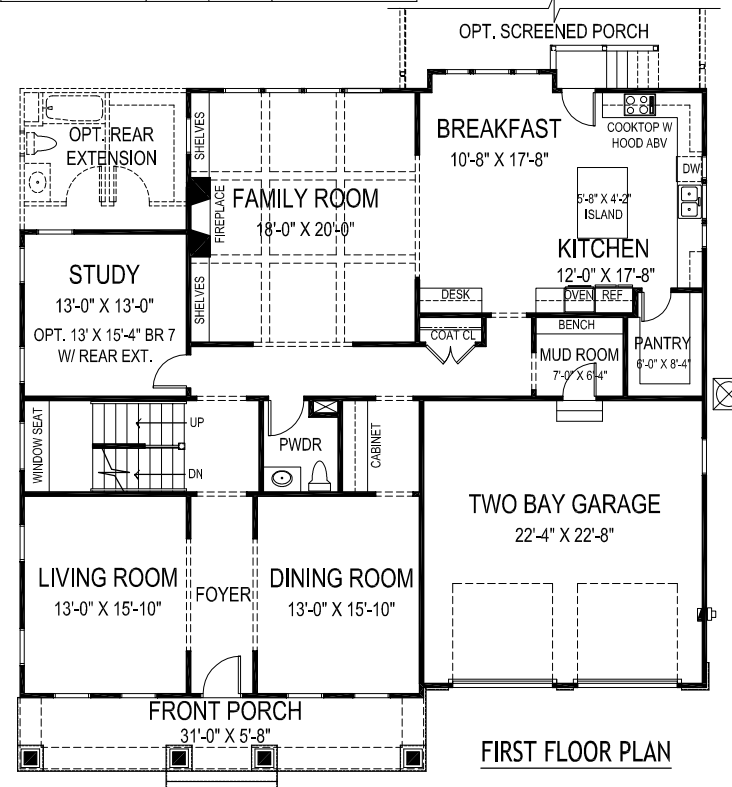
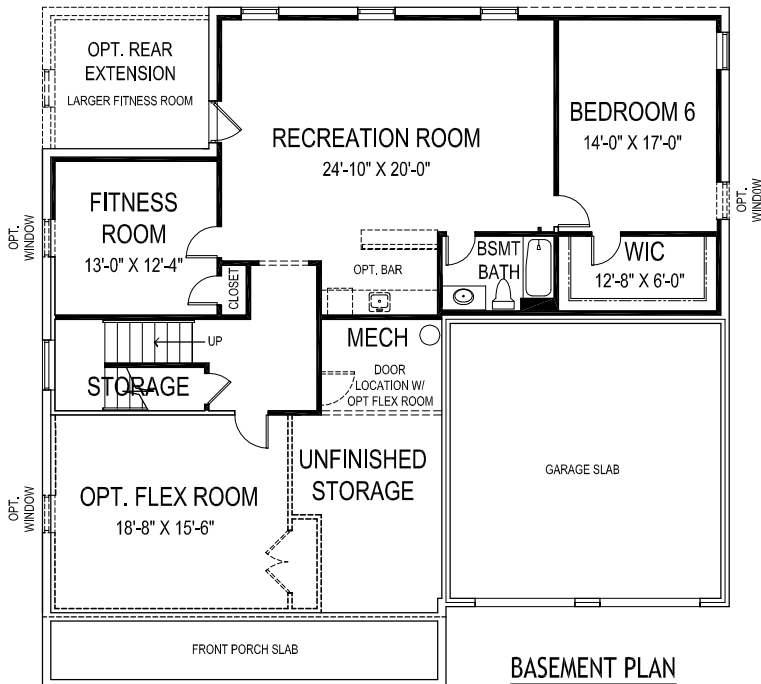
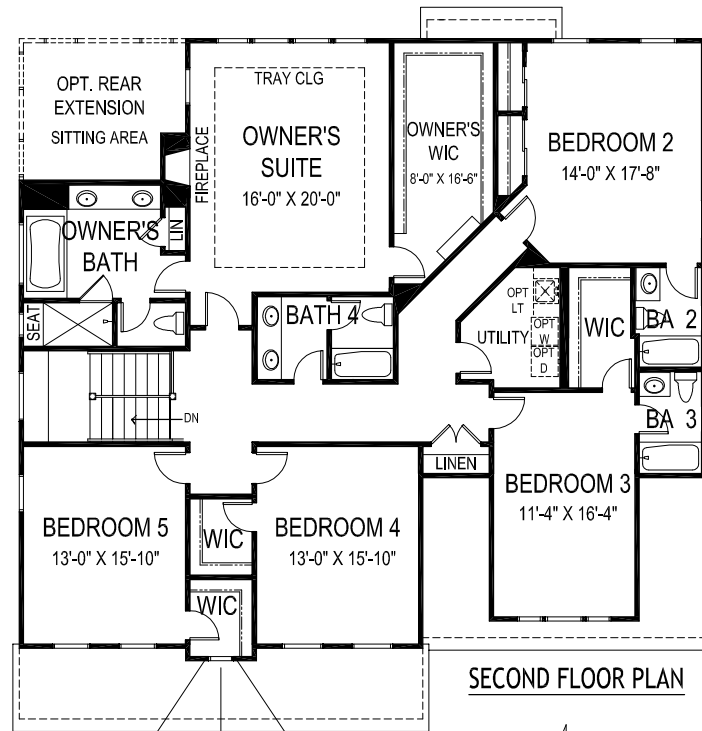






OPTIONAL SINGLE DOOR &  
SIDE ENTRY GARAGE  
AVAILABLE

Rear Extension and Side Entry Garage  
included at 1034 Dead Run Drive



# THE DAVENPORT

55'-0" wide x 54'-6" deep  
6 BR 5 1/2 BA

## FLOOR AREA

FIRST FLOOR	2018 S.F.
SECOND FLOOR	2377 S.F.
ABOVE GRADE FINISHED SPACE	4395 S.F.
FINISHED BASEMENT SPACE	1314 S.F.
TOTAL FINISHED SPACE	5709 S.F.
REAR EXTENSION	453 S.F.
OPTIONAL FLEX ROOM	324 S.F.
TOTAL FINISHABLE AREA	6486 S.F.

Specification and plans  
are provided for illustrative  
purposes only and are  
subject to change,  
modification and/or  
substitution without  
notice. March 6, 2017

